

BOCA WINDS - PARCEL E

A PARCEL OF LAND LYING IN SECTION 22 AND 27, TOWNSHIP 47 SOUTH, RANGE 41 EAST, SAID PARCEL ALSO BEING A REPLAT OF A PORTION OF TRACTS 9, 10, 11, 14, 15 AND 16, FLORIDA FRUITLANDS COMPANY'S SUBDIVISION NO. 2, AS RECORDED IN PLAT BOOK 1, PAGE 102, PUBLIC RECORDS OF PALM BEACH COUNTY, FLORIDA. SHEET 2 OF 8 NOVEMBER, 1993

PALMETTO PARK ROAD
(200' RIGHT-OF-WAY)
O.R.B. 3600, PGS. 1621-1624

LIMITS OF PLAT

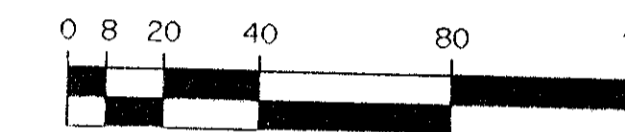
R=2700.00'

$\Delta=30^{\circ}32'12''$

A=1439.01' (TOTAL)

TRACT "L1"

WATER MANAGEMENT TRACT SHALL BE MAINTAINED BY BW HOMEOWNERS ASSOCIATION, INC. WITHOUT RECOURSE TO PALM BEACH COUNTY.

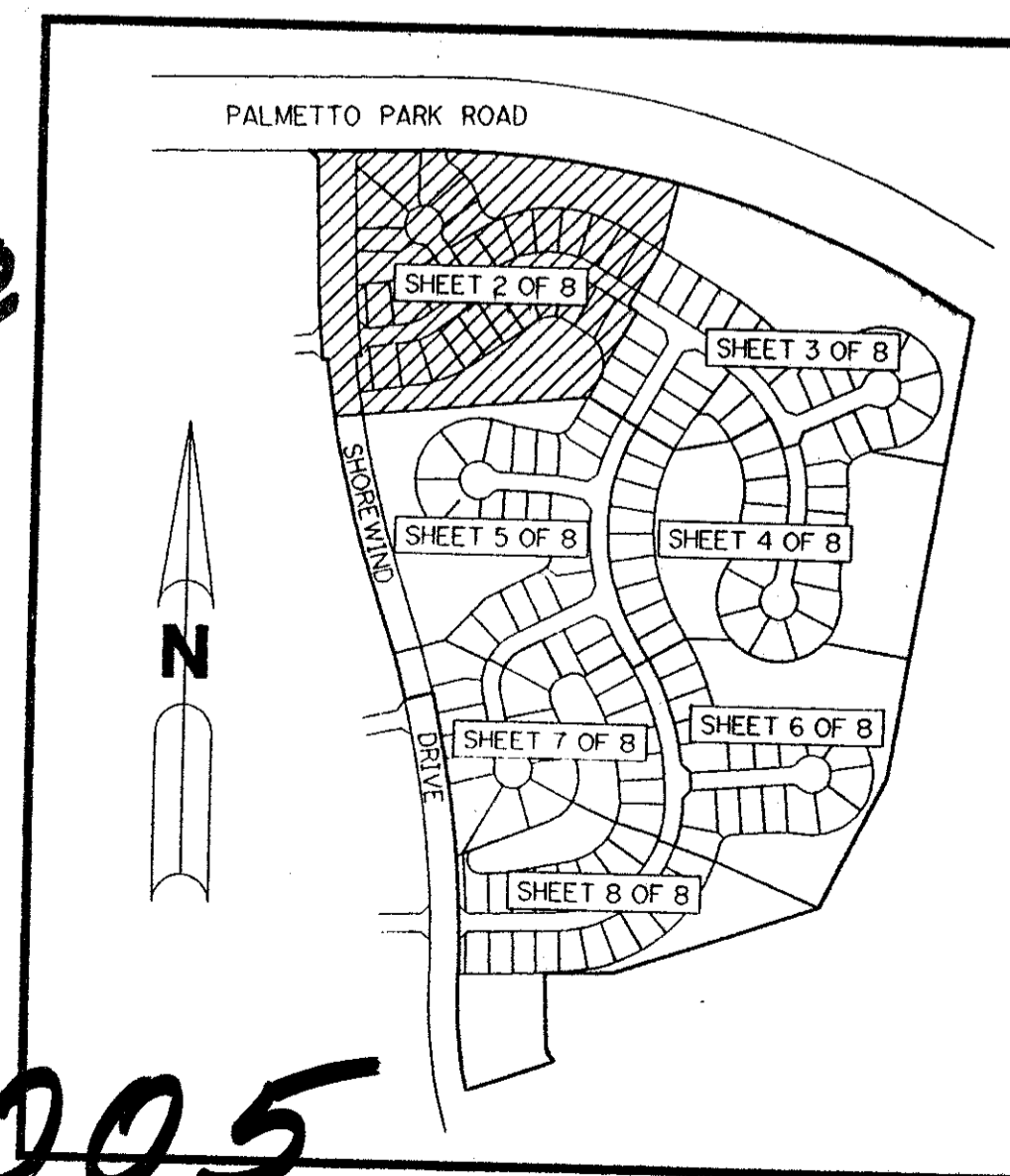


SCALE: 1" = 40'

LEGEND:

- - PERMANENT REFERENCE MONUMENT, PLS #4213
- △ - PERMANENT CONTROL POINT, PLS #4213
- Δ - DELTA ANGLE
- A - ARC LENGTH
- R - RADIUS
- D.E. - DRAINAGE EASEMENT
- F.P.E. - FLOOD PLAIN EASEMENT
- L.A.E. - LIMITED ACCESS EASEMENT
- L.M.E. - LAKE MAINTENANCE EASEMENT
- N.R. - NOT RADIAL
- O.R. - OFFICIAL RECORD
- O.R.B. - OFFICIAL RECORD BOOK
- O.S. - OPEN SPACE
- P.B. - PLAT BOOK
- P.G.S. - PAGES
- P.L.S. - PROFESSIONAL LAND SURVEYOR
- S.T. - SURVEY TIE LINE
- U.E. - UTILITY EASEMENT
- L.M.A.E. - LAKE MAINTENANCE ACCESS EASEMENT
- L.E. - LANDSCAPE EASEMENT
- S.B.T. - SOUTHERN BELL TELEPHONE

THIS INSTRUMENT PREPARED BY PERRY C. WHITE P.L.S. 4213 STATE OF FLORIDA LAWSON, NOBLE AND ASSOCIATES, INC. ENGINEERS PLANNERS SURVEYORS WEST PALM BEACH, FLORIDA



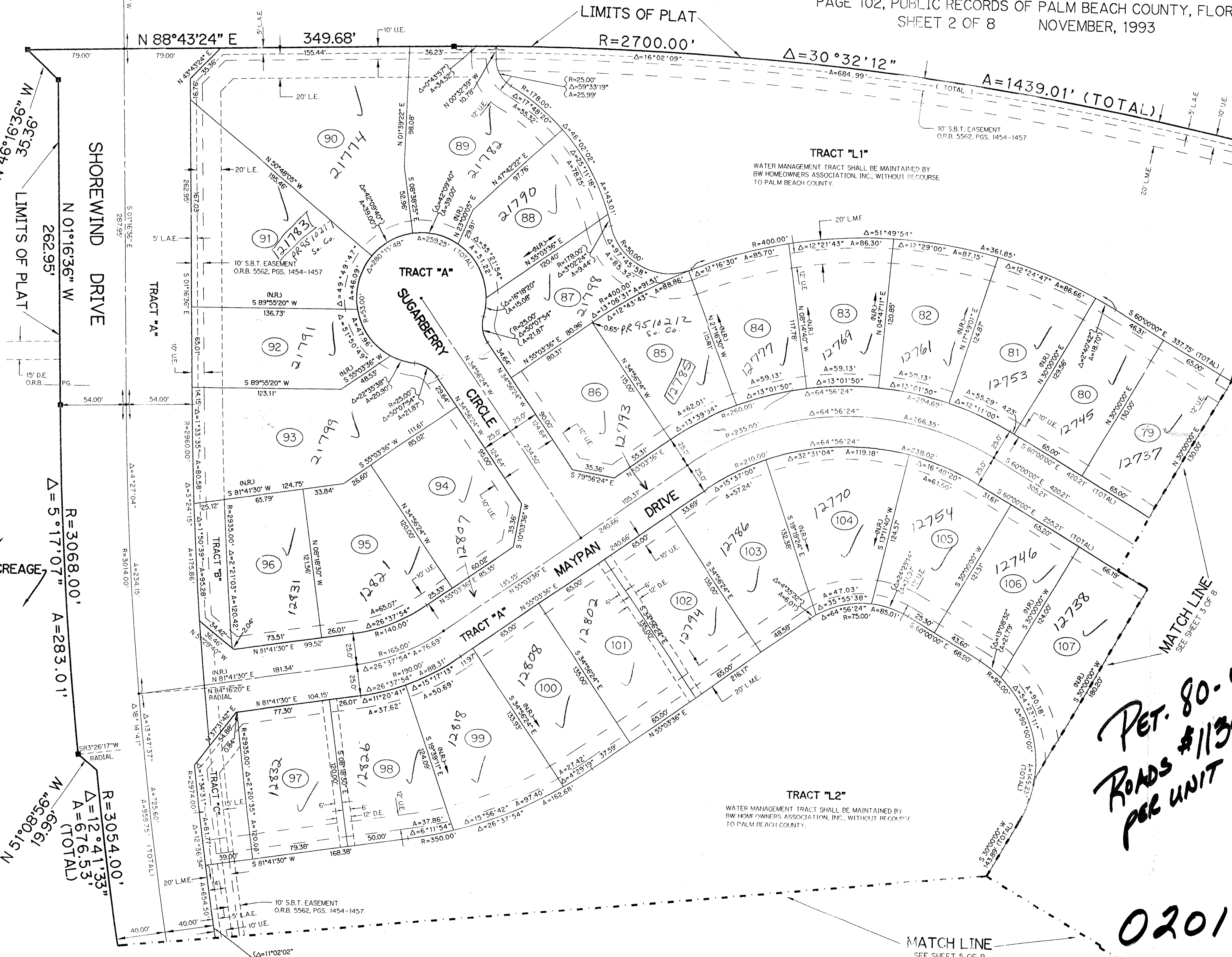
PET. 80-47
ROADS \$1139.00
PER UNIT

0201-005

KEY MAP
N.T.S.

BOCA WINDS - PARCEL E

Parcel E
SUBDIVISION # BOCA WINDS
BOOK 72
FLOOD ZONE A-1
QUAD # 69
SE 80-47
ZIP CODE 33433
PUD NAME BAY WINDS



ACREAGE

R=3068.00'

$\Delta=5^{\circ}17'07''$

A=283.01'

R=3054.00'

$\Delta=12^{\circ}41'33''$

A=676.53'

(TOTAL)

M=9580.15 N

R=3054.00'

$\Delta=12^{\circ}41'33''$

A=676.53'

(TOTAL)

M=9580.15 N